

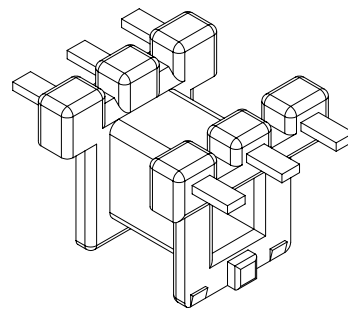
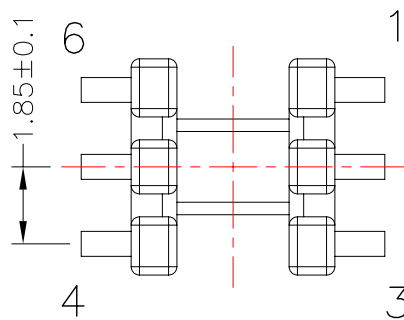
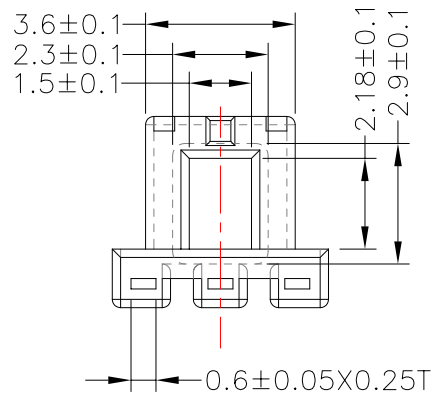
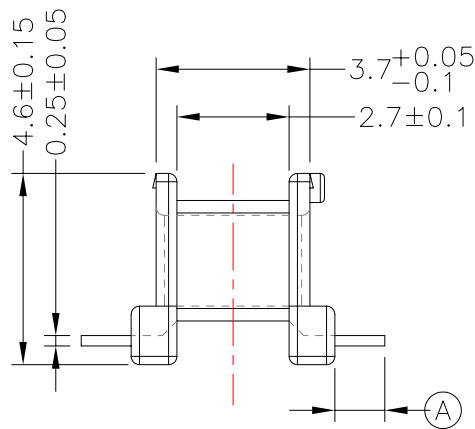
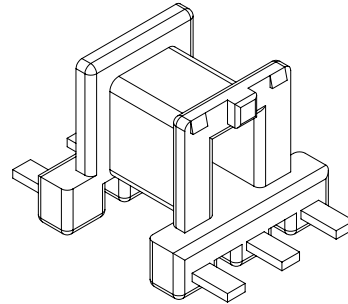
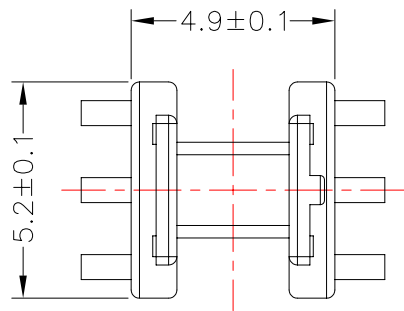


TRANSFORMER BOBBIN  
INDUSTRIAL CO.,LTD.

Tel : 86-769-88789999 Fax : 86-769-88789989  
http:// tbi-tw.com e-mail : tb6688@ms46.hinet.net

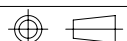
REVISIONS

REV	SYM	DRAFTER	CHECKER	DATE
①		YAN.TANG	G.F.YANG	04/24/09
②				
③				



DWG NO. EE5.0-6P-GW-1.85-J-11

PART NO.	MATERIAL (BOBBIN)	MATERIAL (TERMINAL)	TERMINAL (PLATING)	PIN ALLOCATION	NOTE
TBI-101-01091.1103	PM-9630	PB	Sn	ALL PIN (A) = 1.2±0.1	
TBI-101-01091.1113	PM-9630	PB	Sn	CUT PIN #2,4,5,6 (A) = 1.2±0.1	
TBI-101-01091.1123	PM-9630	PB	Sn	CUT PIN #2,5 (A) = 1.4±0.1	
TBI-101-01091.1133	PM-9630	PB	Sn	CUT PIN #2,4,5,6 (A) = 1.4±0.1	



TOLERANCE: .X±0.15 .XX±0.10 .XXX±0.05

UNIT : m / m

SCALE 5.5 : 1

Finish: 1. PB wire Immersion Sn on terminal : Thickness:Sn plating,100,5 μm (200 μ inches) min,Base nickel 0.625 μm (25 μ inches) min.  
2. CP wire Immersion Sn on terminal : Thickness:Sn plating,100,5 μm (200 μ inches) min.  
3. Coplanarity deviation: 0.10 mm (0.004 inches) max.

REV 1