

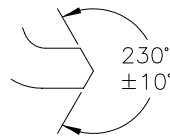
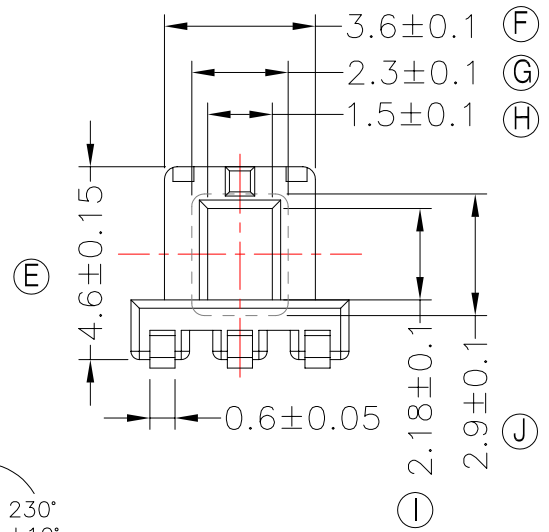
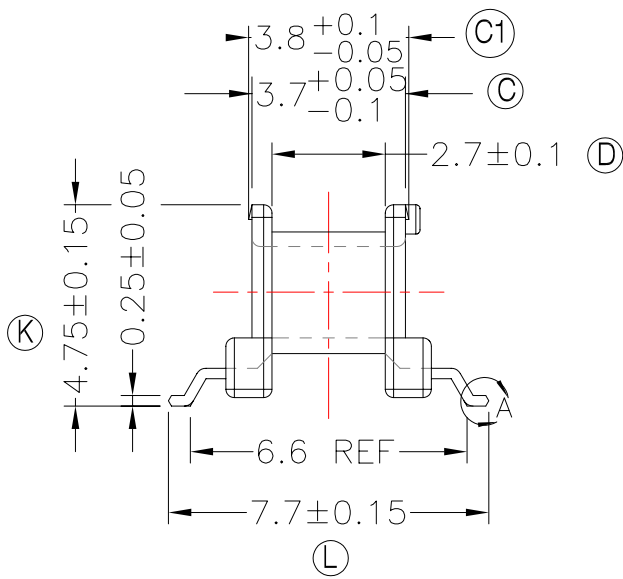
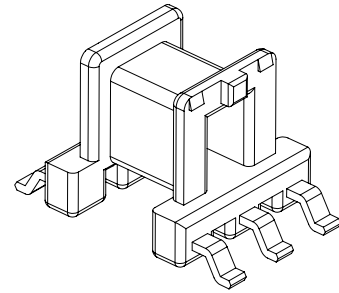
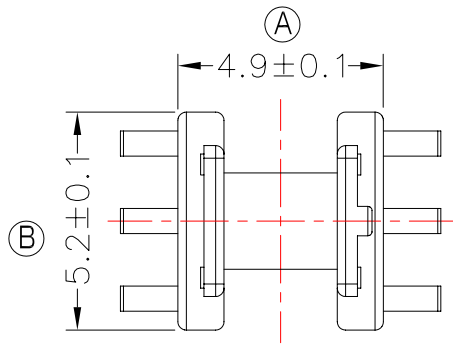


TRANSFORMER BOBBIN
INDUSTRIAL CO.,LTD.

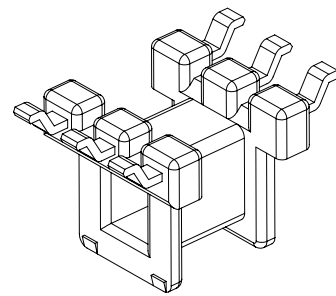
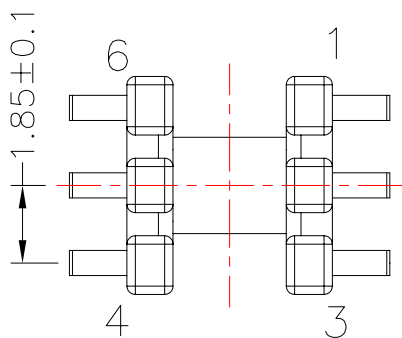
Tel : 86-769-88789999 Fax : 86-769-88789989
http:// tbi-tw.com e-mail : tb6688@ms46.hinet.net

REVISIONS

REV	SYM	DRAFTER	CHECKER	DATE
5		T.S.LII	W.H.HSU	04/02/07
6		S.Y.TANG	G.F.YANG	12/29/07
7		S.Y.TANG	G.F.YANG	06/20/08



DETAIL:A
PATENTED



DWG NO.	EE5.0-6P-GW-1.85-A-1				
PART NO.	MATERIAL (BOBBIN)	MATERIAL (TERMINAL)	TERMINAL (PLATING)	PIN ALLOCATION	NOTE
TBI-101-01011.103	PM-9630	PB	Sn	ALL PIN	
6 TBI-101-01011.113	PM-9630	PB	Sn	CUT PIN # 5	H
7 TBI-101-01011.123	PM-9630	PB	Sn	CUT PIN # 2	
7 TBI-101-01011.133	PM-9630	PB	Sn	CUT PIN # 2,5	
	TOLERANCE: .X±0.15 .XX±0.10 .XXX±0.05			UNIT : m / m	SCALE 5.5 : 1

Finish: 1. Pb wire Immersion Sn on terminal : Thickness:Sn plating,100,5 μm (200 μ inches) min,Base nickel 0.625 μm (25 μ inches) min.
2. CP wire Immersion Sn on terminal : Thickness:Sn plating,100,5 μm (200 μ inches) min.
3. Coplanarity deviation: 0.10 mm (0.004 inches) max.

REV 7