

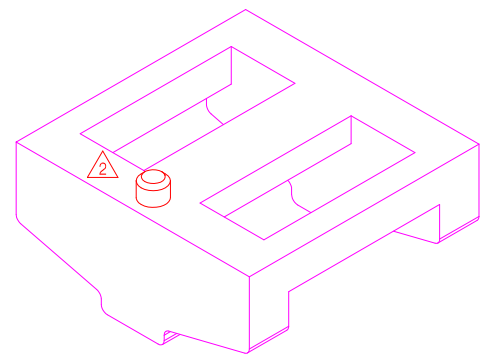
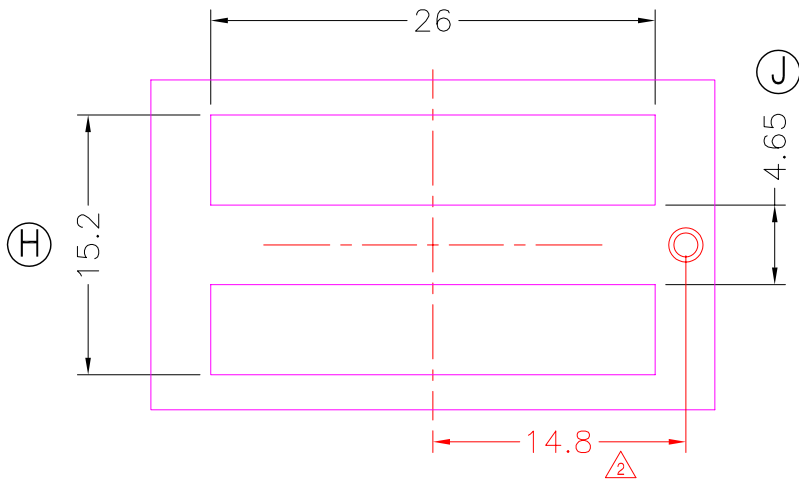
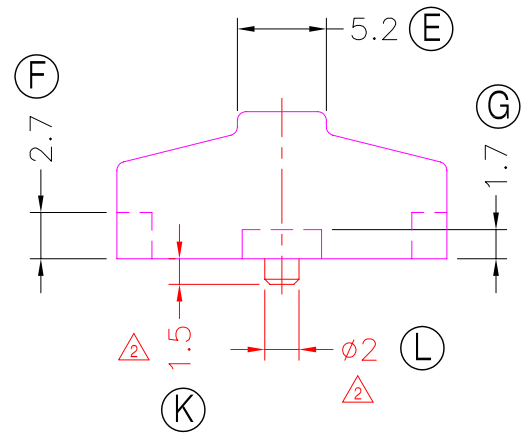
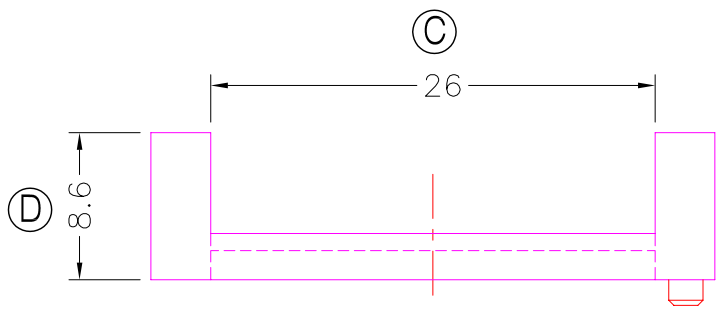
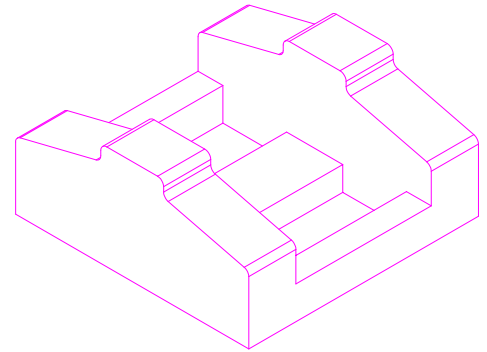
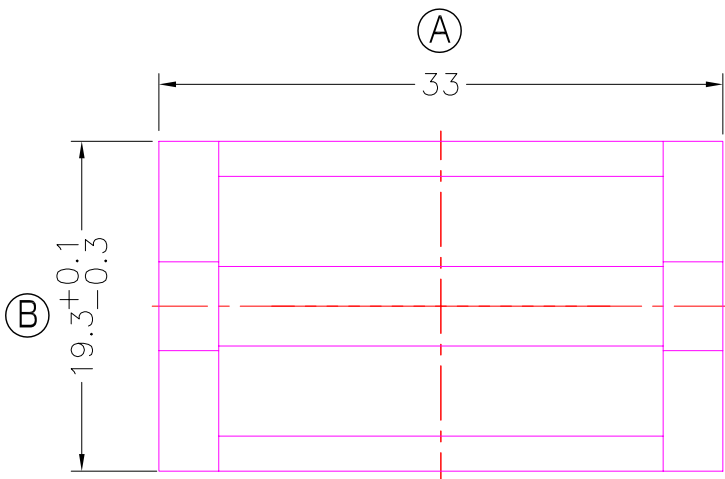


**TRANSFORMER BOBBIN
INDUSTRIAL CO.,LTD.**

Tel : 86-769-88789999 Fax : 86-769-88789989
http:// tbi-tw.com e-mail : tb6688@ms46.hinet.net

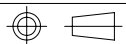
REVISIONS

| REV | SYM | DRAFTER | CHECKER | DATE |
|-----|-----|---------|----------|----------|
| ① | | X.H.GU | G.F.YANG | 03/04/14 |
| ② | | X.H.GU | G.F.YANG | 08/08/14 |
| ③ | | | | |



DWG NO. 1933-NA-C6-12

| PART NO. | MATERIAL (BOBBIN) | MATERIAL (TERMINAL) | TERMINAL (PLATING) | PIN ALLOCATION | NOTE |
|------------------|-------------------|---------------------|--------------------|----------------|------|
| TBI-129-03361.12 | PM-9820 | NA | NA | NA | S |



TOLERANCE: $0 < L \leq 4 : \pm 0.1$ $4 < L \leq 16 : \pm 0.2$ $16 < L \leq 63 : \pm 0.3$

UNIT : m / m

SCALE 1 : 1

Finish: 1. PB wire Immersion Sn on terminal : Thickness:Sn plating,100%, $5 \mu m$ (200μ inches) min,Base nickel $0.625 \mu m$ (25μ inches) min.
2. CP wire Immersion Sn on terminal : Thickness:Sn plating,100%, $5 \mu m$ (200μ inches) min.
3. Coplanarity deviation: 0.10 mm (0.004 inches) max.

REV 2